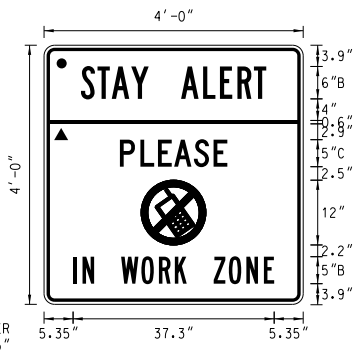


REVISIONS		
NO.	DESCRIPTION	DATE



BORDER
R=1.5"
TH=0.63"
IN=0.47"

NO CELL PHONE SIGN

48"x48"

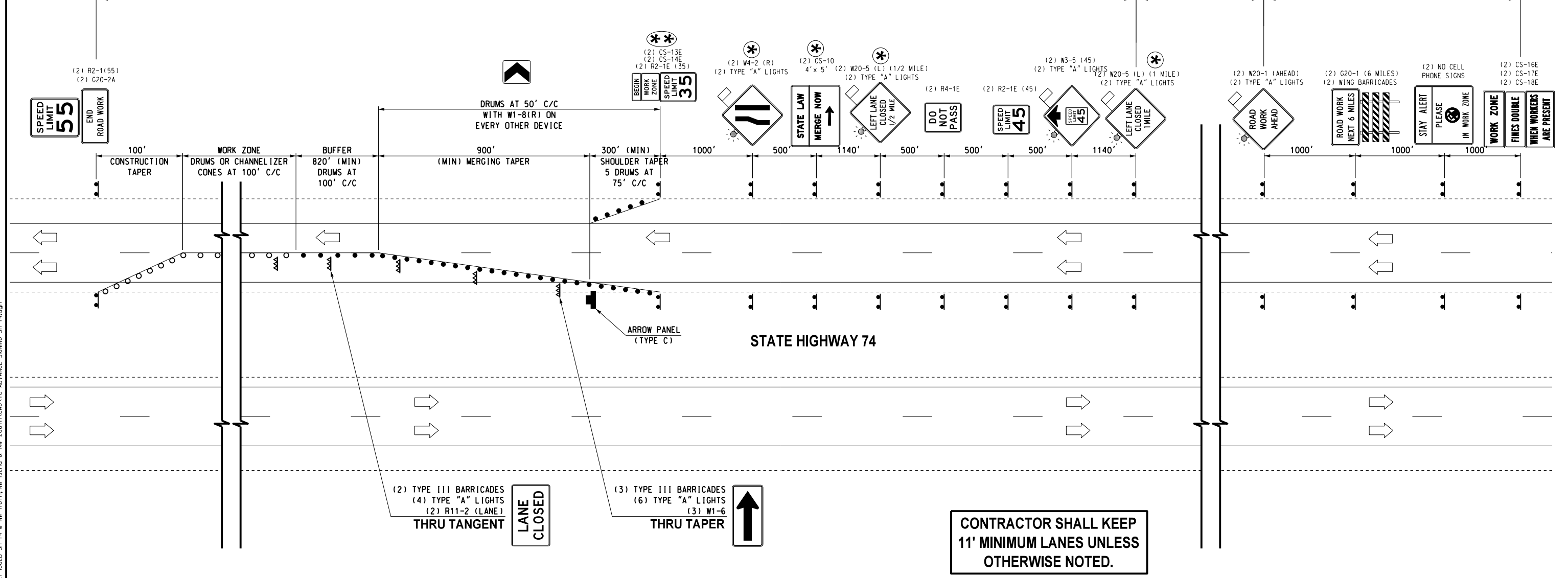
- LEGEND. SYMBOL & BORDER - BLACK NON-REFLECTIVE
BACKGROUND - YELLOW REFLECTIVE
- ▲ LEGEND. SYMBOL & BORDER - BLACK NON-REFLECTIVE
BACKGROUND - ORANGE REFLECTIVE

- * LEFT LANE CLOSURE SHOWN. REVERSE THESE SIGNS FOR RIGHT LANE CLOSURE.
- ** SPEED LIMIT 55 TO BE DISPLAYED DURING WORKING HOURS ONLY

SHORT DURATION (MOBILE) PROJECT SIGNS

VARIABLE

STATIC PROJECT SIGNS



08/10/17 G:\Projects\T-1662B SH 74 @ NW 178th, NW 82nd & NW 206th\CAD\TC ADVANCE SIGNING SH 74.dgn

Design	RWR	08/10/17
Drawn	GDB	08/10/17



DRAWING NOT TO SCALE

**TYPICAL ADVANCE SIGNING
STATE HIGHWAY 74**

State Job No. 14964(08) Sheet No. T30